



CONCEPT 2
Immaculate efficiency

CONCEPT 2



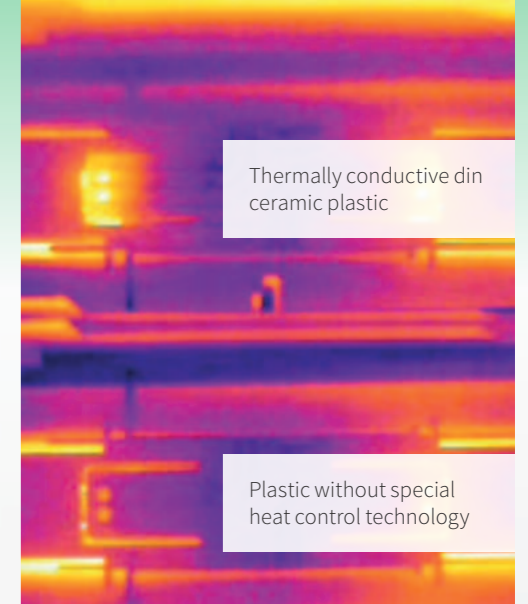
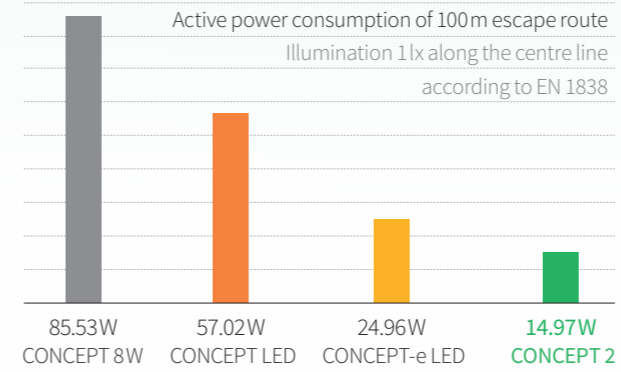
CONCEPT 2

Immaculate efficiency.

A building is renovated on average every 20 years. Within this period, an emergency illumination system **should be operated in a way that conserves resources as much as possible**. The CONCEPT 2 focuses on **efficiency right from the start**, and this has an impact throughout the entire life cycle.

OPTIMISED LUMINOUS EFFICACY

40% power savings are achieved with the new CONCEPT 2 compared to the CONCEPT-e LED. Due to the **reduced power**, there are **clear advantages in the system planning**. For buildings, where large switchgear was necessary in the past, smaller safety power sources are now sufficient.



AVAILABILITY OF SPARE PARTS

The CONCEPT 2 is fully compatible with the **previous models**. We provide both the **LED illuminant insert** and other **spare parts** for at least 10 years.

SOPHISTICATED HEAT MANAGEMENT



5.7 years full guarantee must be well thought out. A great deal of development know-how, experience and the highest manufacturing quality are prerequisites for this promise. The thermal load of the LEDs is reduced through the **targeted optimisation of thermal management** with the aid of a ceramic plastic. This is a **prerequisite for the 50,000 h guarantee promise** to our customers.

By use of the din ceramic plastic, the punctual heat of the LEDs is dissipated much faster. The illustration shows thermal images of the heat sinks in comparison.



LED REPLACEMENT INSERTS

60-80% savings in energy and maintenance costs compared to conventional fluorescent tubes – an argument in itself. Replacing fluorescent luminaires with LED luminaires is possible without tools by using the **CONCEPT 2 replacement insert**.

OPTIMISED ILLUMINATION TECHNOLOGY

Thanks to the application of the **latest LED technology**, **better light values** are achieved with less glare at the same time.



DID YOU KNOW?

Your building is to be constructed in accordance with the EEEF*. The CONCEPT 2 makes a significant contribution to meeting these requirements. For more information, please contact your din contact person.

*Energy Efficiency Act according to EU Directive 2012/27/EU

CONCEPT 2

Simply safe. Safely simple.

Electricians give us clear feedback: In general, a **rising pace** of project realisation and increasingly complex products are observed on the market. Due to the increased time pressure and the lack of resources to train the personnel accordingly, **mistakes often happen during mounting.**

“Simply safe” not only meets the requirement of many operators. Installers demand a product that is **“Safely simple”** and **does not allow for mounting errors.** CONCEPT 2 is an easy-to-install all-rounder luminaire series that saves time where time is scarce.



SOPHISTICATED CABLE ENTRY AREA

Thanks to the **centrally aligned, large cable entry area** and the pre-embossing for surface-mounted installation, even **two E30 cables** can be easily inserted.

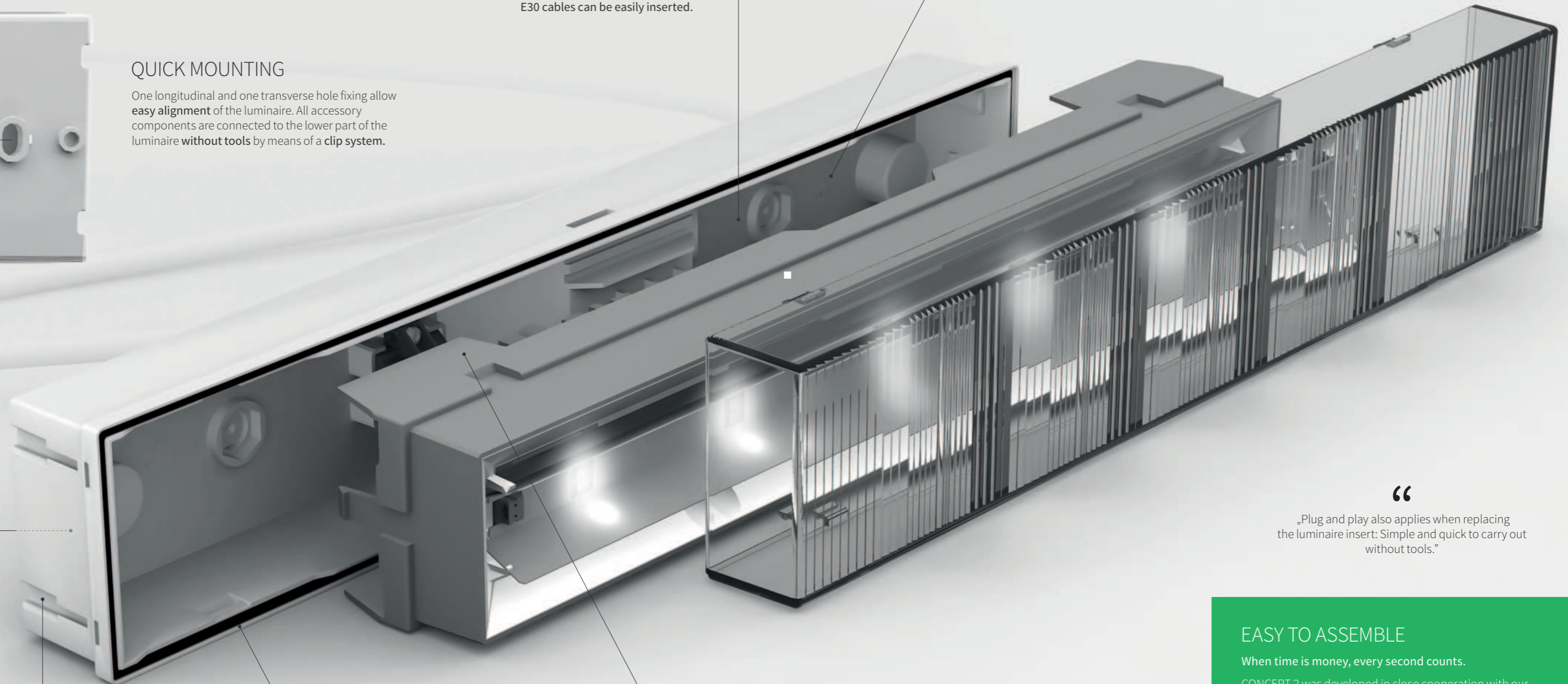
GENEROUS CABLE CONNECTION SPACE

Even through-wiring with 2.5mm² cross-section is easily possible in the generous cable connection space with the **pre-assembled plug-in terminals.**



QUICK MOUNTING

One longitudinal and one transverse hole fixing allow **easy alignment** of the luminaire. All accessory components are connected to the lower part of the luminaire **without tools** by means of a **clip system.**



PANEL MOUNTING WITHOUT TOOLS

The pictogram panel can be mounted without tools using **specially developed brackets.**

IP65 AS STANDARD

The seal inserted as standard, cable **entry-friendly grommets** and the **IP plug** to cover the fixing screws result in a product for the highest IP protection requirements. In addition, the cable entry area is also equipped with water drainage openings, so that **backwater can be excluded.**

PROTECTION OF THE ELECTRONICS

Inconspicuous lugs allow **easy replacement without additional tools** and **protect the electronics from damage.**

“

„Plug and play also applies when replacing the luminaire insert: Simple and quick to carry out without tools.”

EASY TO ASSEMBLE

When time is money, every second counts.

CONCEPT 2 was developed in close cooperation with our customers and is highly appreciated as one of the most **user-friendly luminaires on the market.**

- One quick mounting kit for all luminaire variants
- Tool-free final mounting due to ingenious latching mechanisms
- Simple and versatile accessories for all mounting variants
- Problem-free conversion of the illumination characteristic for emergency luminaires

Emergency sign luminaire with high/low cover



CONCEPT 2 RZ2



CONCEPT 2 RZ1



CONCEPT 2 RZ1 plus / duo

WAP anti-panic luminaire with clear WAP cover



WAP safety luminaire with clear WAP cover



Anti-panic luminaire and low beam luminaire with clear cover



Anti-panic safety luminaire and safety luminaire with light-guiding cover



Pictogram panel accessories for WAP anti-panic luminaire and safety luminaire



CONCEPT 2 WAP S1 - VD 12m



CONCEPT 2 WAP S2 - VD 20m



CONCEPT 2 WAP S3 - VD 32m

Pictogram panel accessories for anti-panic and low beam luminaire and anti-panic safety and safety luminaire



CONCEPT 2 S1 - VD 12m



CONCEPT 2 S2 - VD 20m



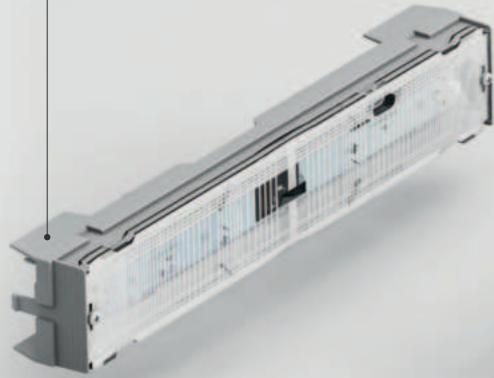
CONCEPT 2 S3 - VD 32m

Modular.
Diverse.
Flexible.

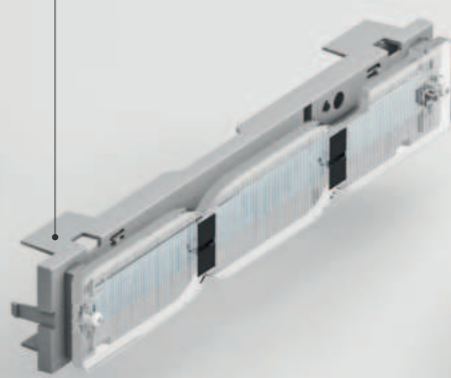
The CONCEPT 2 has precisely coordinated modules and thus enables different solutions for types of application and mounting.

The secret behind it? One luminaire housing for all luminaire variants, accessories for all mounting requirements and easy changing of the mounting type due to the system design.

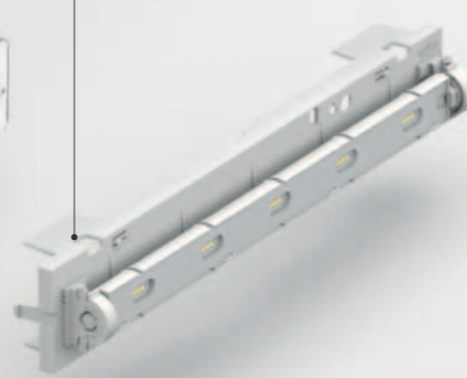
CONCEPT 2 RZ1/RZ1 plus/duo insert



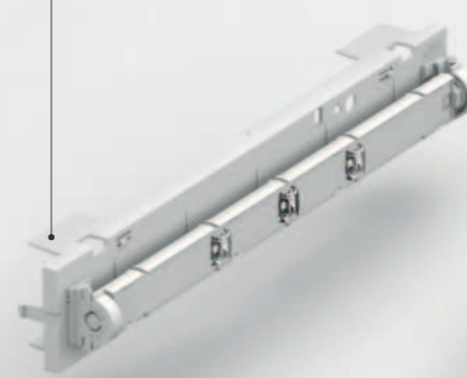
CONCEPT 2 RZ2 insert



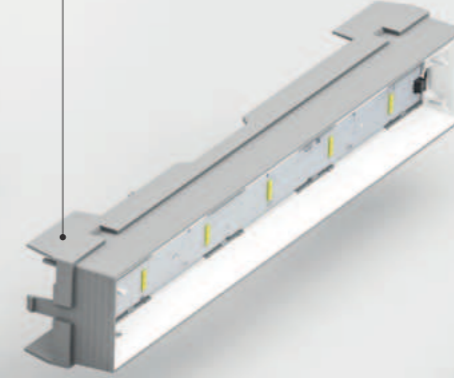
CONCEPT 2 WAP AP insert



CONCEPT 2 WAP SL insert



CONCEPT 2 AP/AS insert



CONCEPT 2 TS/SL insert



CONCEPT 2

THE LUMINAIRE AT A GLANCE.



MODULARITY IN PRACTICE?

The combinations of CONCEPT 2 luminaires and accessories can be found in the catalogue on page 42.

Accessories for recessed mounting



CONCEPT-UP



CONCEPT-concrete



CONCEPT-DE/WE

Accessories for parallel wall mounting



CONCEPT-WA-PP



CONCEPT-WA-PP-G



CONCEPT-WA-PP-G plastic

Accessories for wall bracket or ceiling mounting



CONCEPT-MA-G



CONCEPT-WA-90°

Accessories for pendulum mounting

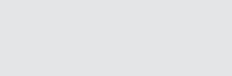


CONCEPT-PE

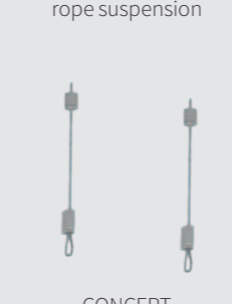


CONCEPT-VP

Accessories for suspended mounting



CONCEPT-BE for chain or rope suspension



CONCEPT steel rope suspension

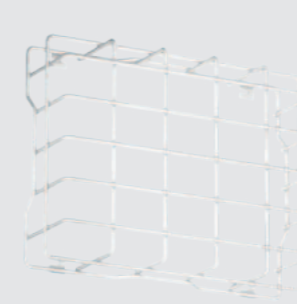
Accessories for ball or impact protection



CONCEPT-BSK1



CONCEPT-SA IK10



CONCEPT-BSK2

Accessories for protection against the elements



CONCEPT-RD



Wall bracket WA-PP-G plastic with canopy function



50,000 h
FULL GUARANTEE

is care-free at the same time for 5.7 years.
CONCEPT 2 – developed and produced in Austria.

CONCEPT 2

One portfolio of luminaires. Many applications. The 250m high DC Tower 1 is used as a hotel, residential and office building and today characterises the Vienna skyline.

CONCEPT IN AUSTRIA'S HIGHEST BUILDING

Exactly

1,952 pcs.

Luminaires are installed in
the Monolith of Vienna.



CONCEPT 2

Emergency sign luminaires



Wall semi-recessed mounting

Item no. (illustration):
9020 09 5018 CONCEPT 2 RZ1 plus PLC24
9020 00 0071 CONCEPT-DE/WE

Wall mounting

Housing: Polycarbonate, flame-retardant, white, RAL 9003, UV-stabilised
Cover: Polycarbonate, flame-retardant, opal, UV-stabilised
Protection class: □ (230V), ◇ (PLC24)
Protection type: IP 65
Temperature range: -15 °C to +40 °C



CONCEPT 2 RZ1

9020 xx 5x05 CONCEPT 2 RZ1
9020 xx 5x18 CONCEPT 2 RZ1 plus
9020 xx 5x19 CONCEPT 2 RZ1 duo

CONCEPT 2 RZ2

9020 0x 5007 CONCEPT 2 RZ2

Accessory

9020 00 0082 CONCEPT RZ1 picto Px one-sided
9020 00 0085 CONCEPT RZ1 picto, ISO 7010, one-sided
9020 00 0071 CONCEPT-DE/WE

CONCEPT 2 RZ1

LED emergency sign luminaire with low cover and 12m viewing distance incl. adhesive pictograms PL/PR/PU according to ISO 7010. The types RZ1 plus/duo include an additional safety light. With the RZ1 duo, the safety light and the emergency sign can be switched or programmed separately.

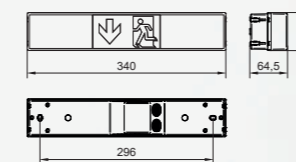
Mounting height [m]	→	→	↔	↔
	1 lux	0.5 lux	1 lux	1 lux
2.5	3.3	3.8	3.4	9.0
3.0	3.5	4.3	3.4	9.5
3.5	3.5	4.6	3.3	9.7
4.0	3.5	4.9	3.0	9.8
4.5	3.3	5.0	2.5	9.5

CONCEPT 2 RZ1 plus/duo

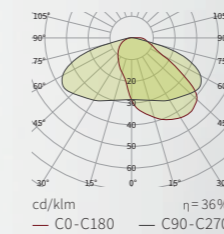
Mounting height [m]	→			→			↔			↔		
	1 lux	0.5 lux	1 lux	1 lux	0.5 lux	1 lux	1 lux	0.5 lux	1 lux	1 lux	0.5 lux	
mA	350	300	120	350	300	120	350	300	120	350	300	120
scAT and scCMR	<i>1h 3h 8h</i>	<i>1h 3h 8h</i>	<i>1h 3h 8h</i>	<i>1h 3h 8h</i>	<i>1h 3h 8h</i>	<i>1h 3h 8h</i>	<i>1h 3h 8h</i>	<i>1h 3h 8h</i>	<i>1h 3h 8h</i>	<i>1h 3h 8h</i>	<i>1h 3h 8h</i>	<i>1h 3h 8h</i>
2,5	3.5	3.5	1.7	9.4	9.4	5.9	3.4	3.4	2.2	4.0	4.0	3.1
3,0	3.5	3.5	1.1	10.0	10.0	5.6	3.7	3.7	1.9	4.4	4.4	3.2
3,5	3.4	3.4	-	10.2	10.2	5.0	3.7	3.7	-	4.7	4.7	3.1
4,0	3.1	3.1	-	10.2	10.2	3.0	3.7	3.7	-	5.0	5.0	2.8
4,5	2.6	2.6	-	10.1	10.1	1.2	3.4	3.4	-	5.2	5.2	2.2

CONCEPTsc 2 RZ1 1h | 3h | 8h

Dimensional drawings [mm]:



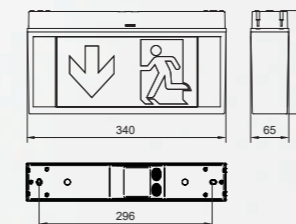
Light distribution RZ1plus/duo:



CONCEPT 2 RZ2

LED emergency sign luminaire with high cover and 24m viewing distance incl. adhesive pictograms PL/PR/PU according to ISO 7010.

Dimensional drawings [mm]:



CONCEPT 2

WAP safety luminaire for area illumination

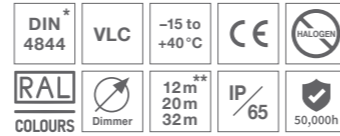


Wall surface mounting

Item no. (illustration):
 9020 09 5309 CONCEPT 2 WAP AP3 PLC24
 9020 00 1033 CONCEPT WAP-S3-PU - VD 32m

WAP Wall mounting

Housing: Polycarbonate, flame-retardant, white RAL 9003, UV-stabilised
 Cover: Polycarbonate, flame-retardant, opal, UV-stabilised
 Protection class: □ (230V), ◇ (PLC24)
 Protection type: IP 65
 Temperature range: -15 °C to +40 °C



CONCEPT 2 WAP AP

9020 09 5309 CONCEPT 2 WAP AP3 PLC24
 9020 0x 5311 CONCEPT 2 WAP AP5
 9020 xx 6x11 CONCEPTsc 2 WAP AP

Type with switching contact

9020 09 5409 CONCEPT 2 WAP AP3 PLC switch
 9020 09 5509 CONCEPT 2 WAP AP3 PLC switch inv
 9020 09 5411 CONCEPT 2 WAP AP5 PLC switch
 9020 09 5511 CONCEPT 2 WAP AP5 PLC switch inv

CONCEPT 2 WAP AP

LED anti-panic luminaire with transparent cover for area illumination and parallel wall mounting.

Mounting height [m]	→		→		↗		↖	
	1 lux		0.5 lux		1 lux		1 lux	
2.0	3.1	4.3	3.7	5.6	3.2	4.2	7.6	10.0
2.5	3.6	4.7	4.3	6.1	3.5	4.7	8.4	11.1
3.0	4.0	5.2	4.6	6.4	3.5	5.1	9.1	12.1
3.5	4.3	5.6	5.0	6.6	3.6	5.4	9.6	12.9
4.0	4.4	5.9	5.4	7.1	3.6	5.8	10.0	13.9

90° - CONCEPT 2 WAP AP3 | CONCEPT 2 WAP AP5 (with / without pictogram panel)

Mounting height [m]	→		→		↗		↖					
	1 lux		0.5 lux		1 lux		1 lux					
mA	350	200	100	350	200	100	350	200	100	350	200	100
scAT und scCMR	<i>1h</i>	<i>3h</i>	<i>8h</i>	<i>1h</i>	<i>3h</i>	<i>8h</i>	<i>1h</i>	<i>3h</i>	<i>8h</i>	<i>1h</i>	<i>3h</i>	<i>8h</i>
2.0	4.3	3.6	3.0	5.6	4.6	3.6	4.2	3.7	3.0	10.0	8.8	7.4
2.5	4.7	4.1	3.5	6.1	4.9	4.1	4.7	4.1	3.2	11.1	9.6	8.2
3.0	5.2	4.5	3.8	6.4	5.3	4.5	5.1	4.4	3.4	12.1	10.4	8.8
3.5	5.6	4.9	4.0	6.6	5.8	4.9	5.4	4.6	3.4	12.9	11.3	9.1
4.0	5.9	5.2	4.1	7.1	6.2	5.2	5.8	4.7	3.3	13.9	12.0	9.4

90° - CONCEPTsc 2 WAP AP 1h | 3h | 8h (with / without pictogram panel)

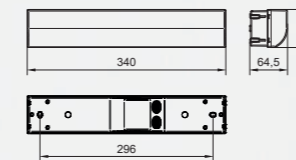
Mounting height [m]	→		→		↗		↖	
	1 lux		0.5 lux		1 lux		1 lux	
2.0	4.2	6.3	5.4	7.8	3.1	4.2	7.7	10.0
2.5	4.5	6.8	5.9	8.6	3.3	4.6	8.3	10.9
3.0	4.7	7.2	6.2	9.1	3.4	5.0	8.9	11.6
3.5	4.7	7.5	6.4	9.6	3.4	5.3	9.2	12.5
4.0	4.7	7.7	6.5	10.0	3.4	5.5	9.5	13.3

60° - CONCEPT 2 WAP AP3 | CONCEPT 2 WAP AP5 (with / without pictogram panel)

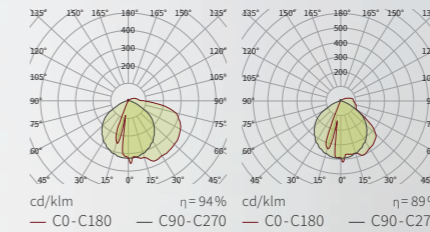
Mounting height [m]	→		→		↗		↖					
	1 lux		0.5 lux		1 lux		1 lux					
mA	350	200	100	350	200	100	350	200	100	350	200	100
scAT und scCMR	<i>1h</i>	<i>3h</i>	<i>8h</i>	<i>1h</i>	<i>3h</i>	<i>8h</i>	<i>1h</i>	<i>3h</i>	<i>8h</i>	<i>1h</i>	<i>3h</i>	<i>8h</i>
2.0	6.3	5.1	4.0	7.8	6.6	5.1	4.2	3.7	3.0	10.0	8.7	7.5
2.5	6.8	5.6	4.3	8.6	7.1	5.6	4.6	4.0	3.1	10.9	9.5	8.0
3.0	7.2	5.9	4.4	9.1	7.6	5.9	5.0	4.3	3.2	11.6	10.2	8.5
3.5	7.5	6.1	4.4	9.6	7.9	6.0	5.3	4.4	3.2	12.5	10.9	8.8
4.0	7.7	6.1	4.3	10.0	8.2	6.1	5.5	4.4	3.1	13.3	11.5	8.9

60° - CONCEPTsc 2 WAP AP 1h | 3h | 8h (with / without pictogram panel)

Dimensional drawings [mm]:



Light distribution of WAP AP 60° and 90°



* With a light alignment of 90°, in combination with AP5 luminaires and DIN 4844 pictogram panels.
 ** Can be combined with pictogram panels of these viewing distances.

CONCEPT 2

WAP safety luminaires with special light guidance system



Wall semi-recessed mounting

Item no. (illustration):
 9020 09 5303 CONCEPT 2 WAP SL5
 9020 00 0071 CONCEPT-DE/WE
 9020 00 1022 CONCEPT WAP-S2-PR - VD 20m
 8020 00 0017 CONCEPT semi-recessed mounting kit

WAP Wall mounting

Housing: Polycarbonate, flame-retardant, white, RAL 9003, UV-stabilised
 Cover: Polycarbonate, flame-retardant, opal, UV-stabilised
 Protection class: □ (230V), ◇ (PLC24)
 Protection type: IP 65
 Temperature range: -15 °C to +40 °C



CONCEPT 2 WAP SL

9020 09 5301 CONCEPT 2 WAP SL3 PLC24
 9020 0x 5303 CONCEPT 2 WAP SL5
 9020 xx 6x03 CONCEPTsc 2 WAP SL

Type with switching contact

9020 09 5401 CONCEPT 2 WAP SL3 PLC switch
 9020 09 5501 CONCEPT 2 WAP SL3 PLC switch inv
 9020 09 5403 CONCEPT 2 WAP SL5 PLC switch
 9020 09 5503 CONCEPT 2 WAP SL5 PLC switch inv

CONCEPT 2 WAP SL

LED safety luminaire with special light-guiding lenses, transparent cover for escape route illumination and parallel wall mounting.

Mounting height [m]	→		→		↗		↖	
	1 lux		0.5 lux		1 lux		1 lux	
2.0	2.1	3.5	2.9	4.6	4.3	5.4	10.0	12.2
2.5	2.0	3.7	3.1	5.0	4.8	6.1	11.3	13.9
3.0	1.6	3.8	3.0	5.2	5.2	6.9	12.7	15.6
3.5	-	3.7	2.8	5.3	-	7.6	8.9	17.3
4.0	-	3.6	-	5.3	-	8.3	-	18.9

90° - CONCEPT 2 WAP SL3 | CONCEPT 2 WAP SL5 (with / without pictogram panel)

Mounting height [m]	→		→		↗		↖		
	1 lux		0.5 lux		1 lux		1 lux		
mA	350	200	100	350	200	100	350	200	100
scAT und scCMR	<i>1h</i>	<i>3h</i>	<i>8h</i>	<i>1h</i>	<i>3h</i>	<i>8h</i>	<i>1h</i>	<i>3h</i>	<i>8h</i>
2.0	3.5	2.7	1.9	4.6	3.7	2.7	5.4	4.8	4.1
2.5	3.7	2.8	1.7	5.0	4.0	2.8	6.1	5.5	4.6
3.0	3.8	2.8	1.0	5.2	4.0	2.8	6.9	6.1	5.0
3.5	3.7	2.5	-	5.3	4.0	-	7.6	6.7	-
4.0	3.6	2.0	-	5.3	3.9	-	8.3	7.1	-

90° - CONCEPTsc 2 WAP SL 1h | 3h | 8h (with / without pictogram panel)

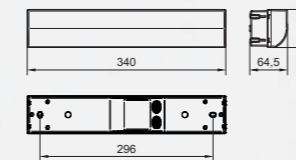
Mounting height [m]	→		→		↗		↖	
	1 lux		0.5 lux		1 lux		1 lux	
2.0	1.9	3.4	2.8	4.5	4.5	5.5	10.4	12.5
2.5	1.9	3.5	2.9	4.8	5.0	6.4	11.9	14.1
3.0	1.6	3.5	2.8	5.0	5.5	7.1	13.1	15.8
3.5	-	3.5	2.6	5.0	-	7.8	9.1	17.5
4.0	-	3.4	-	5.0	-	8.4	-	19.1

75° - CONCEPT 2 WAP SL3 | CONCEPT 2 WAP SL5 (with / without pictogram panel)

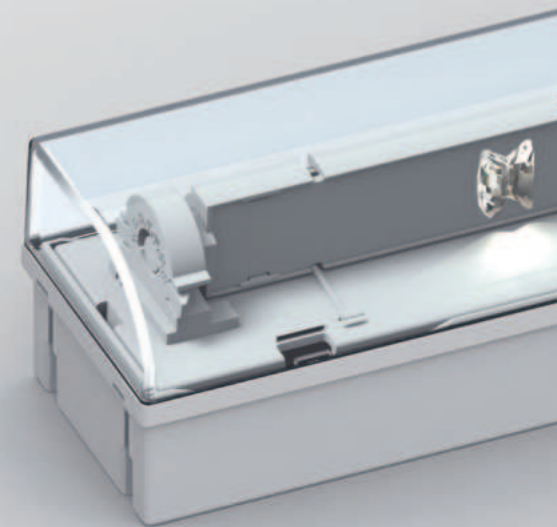
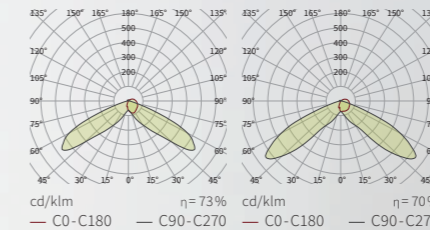
Mounting height [m]	→		→		↗		↖		
	1 lux		0.5 lux		1 lux		1 lux		
mA	350	200	100	350	200	100	350	200	100
scAT und scCMR	<i>1h</i>	<i>3h</i>	<i>8h</i>	<i>1h</i>	<i>3h</i>	<i>8h</i>	<i>1h</i>	<i>3h</i>	<i>8h</i>
2.0	3.4	2.6	1.8	4.5	3.6	2.6	5.5	5.1	4.4
2.5	3.5	2.6	1.7	4.8	3.8	2.6	6.4	5.8	4.9
3.0	3.5	2.6	-	5.0	3.8	2.6	7.1	6.4	5.3
3.5	3.5	2.3	-	5.0	3.8	-	7.8	6.8	-
4.0	3.4	2.0	-	5.0	3.7	-	8.4	7.3	-

75° - CONCEPTsc 2 WAP SL 1h | 3h | 8h (with / without pictogram panel)

Dimensional drawings [mm]:



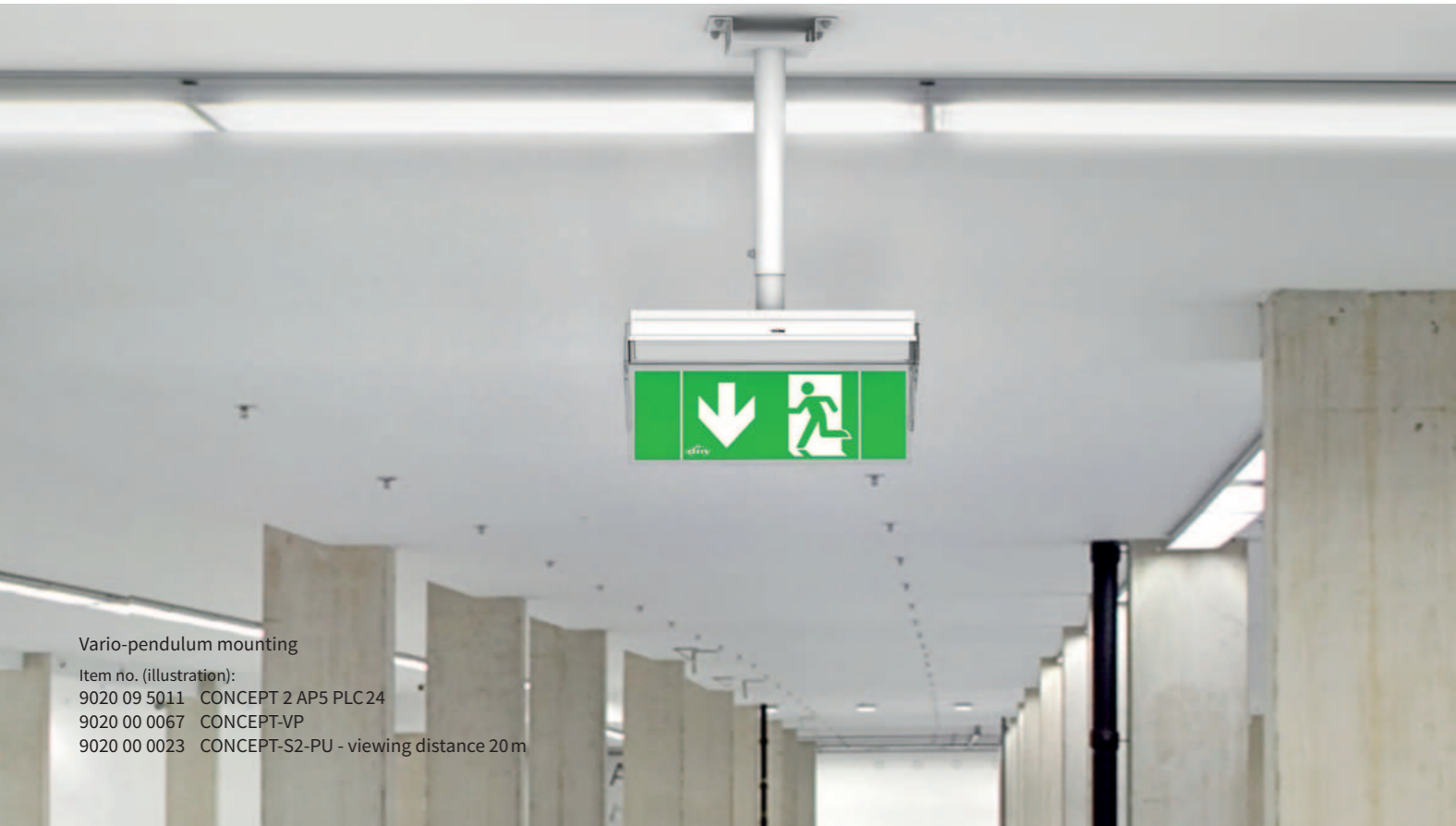
Light distribution of WAP SL 75° and 90°



* Can be combined with pictogram panels of these viewing distances.

CONCEPT 2

Safety luminaires for area illumination



Vario-pendulum mounting

Item no. (illustration):
 9020 09 5011 CONCEPT 2 AP5 PLC24
 9020 00 0067 CONCEPT-VP
 9020 00 0023 CONCEPT-S2-PU - viewing distance 20m

Ceiling mounting/Wall mounting

Housing: Polycarbonate, flame-retardant, white, RAL 9003, UV-stabilised
 Cover: Polycarbonate, flame-retardant, transparent, UV-stabilised, light-guiding (AS)
 Protection class: □ (230V), ◇ (PLC24)
 Protection type: IP 65
 Temperature range: -15 °C to +40 °C



CONCEPT 2 AP

9020 09 5009 CONCEPT 2 AP3 PLC24
 9020 0x 5011 CONCEPT 2 AP5
 9020 xx 5x11 CONCEPTsc 2 AP

Type with switching contact

9020 09 5109 CONCEPT 2 AP3 PLC switch
 9020 09 5209 CONCEPT 2 AP3 PLC switch inv
 9020 09 5111 CONCEPT 2 AP5 PLC switch
 9020 09 5211 CONCEPT 2 AP5 PLC switch inv

CONCEPT 2 AS

9020 09 5016 CONCEPT 2 AS3 PLC24
 9020 0x 5017 CONCEPT 2 AS5
 9020 xx 5x17 CONCEPTsc 2 AS

Type with switching contact

9020 09 5116 CONCEPT 2 AS3 PLC switch
 9020 09 5216 CONCEPT 2 AS3 PLC switch inv
 9020 09 5117 CONCEPT 2 AS5 PLC switch
 9020 09 5217 CONCEPT 2 AS5 PLC switch inv

CONCEPT 2 AP

LED anti-panic luminaire with transparent cover for area illumination.

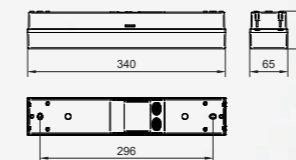
Mounting height [m]	↔			↔↔			↔↔↔			↔↔↔↔		
	1 lux			1 lux			1 lux			1 lux		
2.5	3.6	4.2		8.1	9.2		8.8	11.7		3.5	4.9	
3.0	3.8	4.8		9.0	10.6		9.4	12.8		3.7	5.3	
3.5	3.9	5.3		10.0	11.8		9.9	13.7		3.8	5.6	
4.0	3.8	5.8		10.5	13.1		10.3	14.5		3.8	5.9	
4.5	3.7	6.3		10.8	14.3		10.5	15.2		3.8	6.1	

CONCEPT 2 AP3 | CONCEPT 2 AP5 (without pictogram panel)

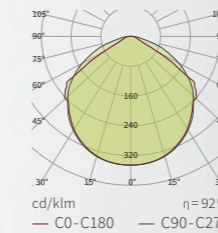
Mounting height [m]	↔			↔↔			↔↔↔			↔↔↔↔		
	1 lux			1 lux			1 lux			1 lux		
mA	350	200	100	350	200	100	350	200	100	350	200	100
scAT und scCMR	1h	3h	8h	1h	3h	8h	1h	3h	8h	1h	3h	8h
2,5	4,2	3,9	3,5	9,2	8,6	7,9	11,7	10,2	8,4	4,9	4,2	3,3
3,0	4,8	4,4	3,6	10,6	9,9	8,8	12,8	11,1	9,0	5,3	4,5	3,5
3,5	5,3	4,8	3,6	11,8	11,0	9,6	13,7	11,8	9,4	5,6	4,7	3,5
4,0	5,8	5,0	3,5	13,1	11,9	10,0	14,5	12,4	9,8	5,9	4,8	3,5
4,5	6,3	5,1	3,4	14,3	12,9	10,2	15,2	12,9	9,9	6,1	4,9	3,4

CONCEPTsc 2 AP 1h | 3h | 8h (without pictogram panel)

Dimensional drawings [mm]:



Light distribution of AP3 and AP5:



CONCEPT 2 AS

LED anti-panic safety luminaire with special light-guiding cover for area illumination.

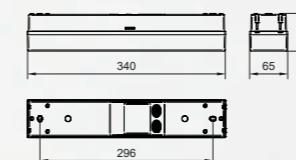
Mounting height [m]	↔			↔↔			↔↔↔			↔↔↔↔		
	1 lux			1 lux			1 lux			1 lux		
2.5	2.6	3.6		6.6	8.1		10.8	15.5		4.1	5.9	
3.0	2.6	3.9		7.1	9.1		10.8	15.6		4.5	6.5	
3.5	2.5	4.2		7.4	10.0		11.5	16.6		4.4	6.6	
4.0	2.3	4.4		7.4	10.8		12.4	17.8		4.3	6.7	
4.5	2.1	4.4		7.3	11.5		12.4	18.4		2.7	7.2	

CONCEPT 2 AS3 | CONCEPT 2 AS5 (without pictogram panel)

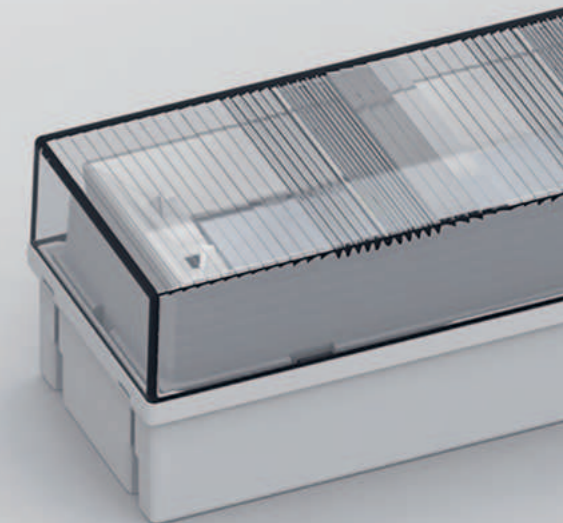
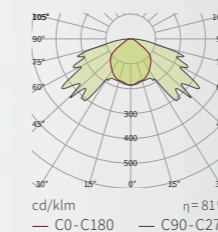
Mounting height [m]	↔			↔↔			↔↔↔			↔↔↔↔		
	1 lux			1 lux			1 lux			1 lux		
mA	350	200	100	350	200	100	350	200	100	350	200	100
scAT und scCMR	1h	3h	8h	1h	3h	8h	1h	3h	8h	1h	3h	8h
2,5	3,6	3,1	2,4	8,1	7,4	6,3	15,5	12,3	10,1	5,9	5,1	4,0
3,0	3,9	3,4	2,4	9,1	8,2	6,8	15,6	13,5	10,3	6,5	5,1	4,4
3,5	4,2	3,4	2,3	10,0	8,9	6,9	16,6	14,2	11,1	6,6	5,6	3,9
4,0	4,4	3,4	2,0	10,8	9,3	6,8	17,8	14,1	11,4	6,7	6,0	3,7
4,5	4,4	3,3	1,7	11,5	9,6	6,7	18,4	14,9	11,8	7,2	6,2	1,9

CONCEPTsc 2 AS 1h | 3h | 8h (without pictogram panel)

Dimensional drawings [mm]:



Light distribution of AS3 and AS5:



* In combination with AP5 luminaires and DIN 4844 pictogram panels.
 ** Can be combined with pictogram panels of these viewing distances.

CONCEPT 2

Safety luminaires with special light guidance system

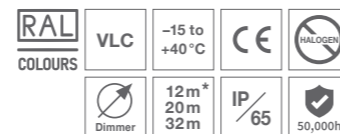


Ceiling mounting in exposed concrete

Item no. (illustration):
 9020 09 5001 CONCEPT 2 SL3 PLC24
 9020 00 0071 CONCEPT-DE/WE
 9020 00 0072 CONCEPT-concrete

Ceiling mounting/Wall mounting

Housing: Polycarbonate, flame-retardant, white, RAL 9003, UV-stabilised
 Cover: Polycarbonate, flame-retardant, transparent, light-guiding
 Protection class: □ (230V), ◇ (PLC24)
 Protection type: IP 65
 Temperature range: -15 °C to +40 °C



CONCEPT 2 SL

9020 09 5001 CONCEPT 2 SL3 PLC24
 9020 0x 5003 CONCEPT 2 SL5
 9020 xx 5x03 CONCEPTsc 2 SL

Type with switching contact

9020 09 5101 CONCEPT 2 SL3 PLC switch
 9020 09 5201 CONCEPT 2 SL3 PLC switch inv
 9020 09 5103 CONCEPT 2 SL5 PLC switch
 9020 09 5203 CONCEPT 2 SL5 PLC switch inv

CONCEPT 2 TS

9020 09 5013 CONCEPT 2 TS3 PLC24
 9020 0x 5015 CONCEPT 2 TS5
 9020 xx 5x15 CONCEPTsc 2 TS

Type with switching contact

9020 09 5113 CONCEPT 2 TS3 PLC switch
 9020 09 5213 CONCEPT 2 TS3 PLC switch inv
 9020 09 5115 CONCEPT 2 TS5 PLC switch
 9020 09 5215 CONCEPT 2 TS5 PLC switch inv

CONCEPT 2 SL

LED safety luminaire with special light-guiding cover for escape route illumination.

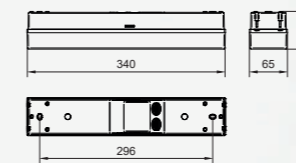
Mounting height [m]	↔		↔↔		↔↔↔		↔↔↔↔	
	1 lux		1 lux		1 lux		1 lux	
2.5	1.9	2.4	4.5	5.2	12.9	16.6	5.5	6.9
3.0	2.0	2.6	4.9	6.0	14.1	18.3	6.0	7.4
3.5	2.1	2.8	5.4	6.6	15.3	19.4	6.2	8.0
4.0	2.2	3.0	5.7	7.1	16.4	20.4	6.5	8.6
4.5	2.2	3.2	5.8	7.5	17.2	21.6	6.9	9.1

CONCEPT 2 SL3 | CONCEPT 2 SL5 (without pictogram panel)

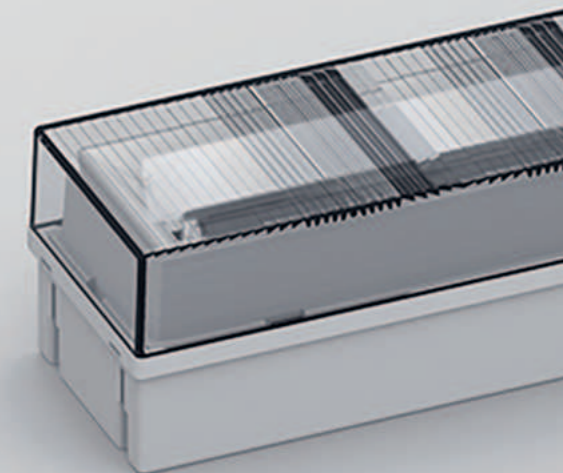
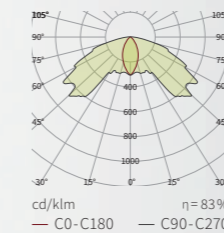
Mounting height [m]	↔		↔↔		↔↔↔		↔↔↔↔		
	1 lux		1 lux		1 lux		1 lux		
mA	350	200	100	350	200	100	350	200	100
<i>scAT und scCMR</i>	<i>1h</i>	<i>3h</i>	<i>8h</i>	<i>1h</i>	<i>3h</i>	<i>8h</i>	<i>1h</i>	<i>3h</i>	<i>8h</i>
2.5	2.4	2.1	1.7	5.2	4.9	4.2	16.6	14.6	11.9
3.0	2.6	2.3	1.8	6.0	5.4	4.6	18.3	15.5	13.1
3.5	2.8	2.4	1.9	6.6	5.8	4.9	19.4	16.7	14.1
4.0	3.0	2.5	1.8	7.1	6.3	5.0	20.4	17.9	14.8
4.5	3.2	2.6	1.7	7.5	6.7	5.2	21.6	19.0	15.2

CONCEPTsc 2 SL 1h | 3h | 8h (without pictogram panel)

Dimensional drawings [mm]:



Light distribution of SL3 and SL5:



CONCEPT 2 TS

LED low beam luminaire with transparent cover and low beam reflector for high bay mounting.

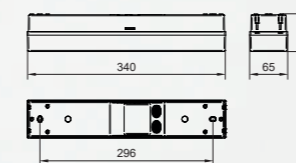
Mounting height [m]	↔		↔↔		↔↔↔		↔↔↔↔	
	1 lux		1 lux		1 lux		1 lux	
6.0	3.1	4.7	8.0	10.8	14.3	20.3	5.1	8.2
7.0	2.8	4.8	8.4	11.7	14.6	21.7	4.9	8.5
8.0	2.5	4.9	8.6	12.8	14.6	22.7	4.5	8.7
9.0	1.7	5.2	8.5	13.3	14.4	23.5	3.7	8.8
10.0	0.5	5.3	7.8	13.6	13.8	24.1	2.4	8.7

CONCEPT 2 TS3 | CONCEPT 2 TS5 (without pictogram panel)

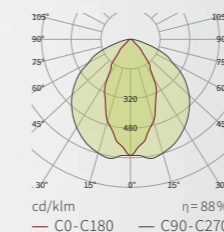
Mounting height [m]	↔		↔↔		↔↔↔		↔↔↔↔		
	1 lux		1 lux		1 lux		1 lux		
mA	350	200	100	350	200	100	350	200	100
<i>scAT und scCMR</i>	<i>1h</i>	<i>3h</i>	<i>8h</i>	<i>1h</i>	<i>3h</i>	<i>8h</i>	<i>1h</i>	<i>3h</i>	<i>8h</i>
6.0	4.7	3.8	2.8	10.8	9.7	7.6	20.3	17.4	13.5
7.0	4.8	4.0	2.5	11.7	10.3	8.0	21.7	18.1	13.7
8.0	4.9	4.0	1.9	12.8	10.6	8.0	22.7	18.7	13.5
9.0	5.2	3.7	1.0	13.3	10.9	7.5	23.5	19.1	13.1
10.0	5.3	3.4	-	13.6	11.3	6.9	24.1	19.2	12.4

CONCEPTsc 2 TS 1h | 3h | 8h (without pictogram panel)

Dimensional drawings [mm]:



Light distribution of TS3 and TS5:



* Can be combined with pictogram panels of these viewing distances.

CONCEPT 2

Pictogram panels for safety luminaires



PICTOGRAM PANELS S1

Pictogram panel for suspended mounting,
Illumination according to EN 1838 or according to DIN 4844.
Viewing distance 12m, pictograms according to ISO 7010

Material: PMMA

9020 00 0011	CONCEPT-S1-PL-VD 12m
9020 00 0012	CONCEPT-S1-PR-VD 12m
9020 00 0013	CONCEPT-S1-PU-VD 12m
9020 00 0014	CONCEPT-S1-PL/PR-VD 12m
9020 00 0015	CONCEPT-S1-Px - VD 12m
9020 00 0016	CONCEPT-S1-ISO 7010 - VD 12m
9020 00 0111	CONCEPT-S1-PL-VD 12m DIN 4844
9020 00 0112	CONCEPT-S1-PR-VD 12m DIN 4844
9020 00 0113	CONCEPT-S1-PU-VD 12m DIN 4844
9020 00 0114	CONCEPT-S1-PL/PR-VD 12m DIN 4844
9020 00 0115	CONCEPT-S1-Px 4844 - VD 12m
9020 00 0116	CONCEPT-S1-ISO 7010, 4844 - VD 12m

PICTOGRAM PANELS S2

Pictogram panel for suspended mounting,
Illumination according to EN 1838 or according to DIN 4844.
Viewing distance 20 m, pictograms according to ISO 7010

Material: PMMA

9020 00 0021	CONCEPT-S2-PL-VD 20m
9020 00 0022	CONCEPT-S2-PR-VD 20m
9020 00 0023	CONCEPT-S2-PU-VD 20m
9020 00 0024	CONCEPT-S2-PL/PR-VD 20m
9020 00 0025	CONCEPT-S2-Px - VD 20m
9020 00 0026	CONCEPT-S2- ISO 7010 - VD 20m
9020 00 0121	CONCEPT-S2-PL-VD 20m DIN 4844
9020 00 0122	CONCEPT-S2-PR-VD 20m DIN 4844
9020 00 0123	CONCEPT-S2-PU-VD 20m DIN 4844
9020 00 0124	CONCEPT-S2-PL/PR-VD 20m DIN 4844
9020 00 0125	CONCEPT-S2-Px 4844 - VD 20m
9020 00 0126	CONCEPT-S2- ISO 7010, 4844 - VD 20m

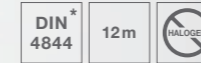
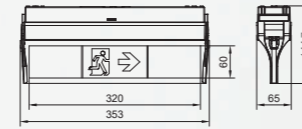
PICTOGRAM PANELS S3

Pictogram panel for suspended mounting,
Illumination according to EN 1838 or according to DIN 4844.
Viewing distance 32m, pictograms according to ISO 7010

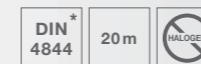
Material: PMMA

9020 00 0031	CONCEPT-S3-PL-VD 32m
9020 00 0032	CONCEPT-S3-PR-VD 32m
9020 00 0033	CONCEPT-S3-PU-VD 32m
9020 00 0034	CONCEPT-S3-PL/PR-VD 32m
9020 00 0035	CONCEPT-S3-Px - VD 32m
9020 00 0036	CONCEPT-S3-ISO 7010 - VD 32m
9020 00 0131	CONCEPT-S3-PL-VD 32m DIN 4844
9020 00 0132	CONCEPT-S3-PR-VD 32m DIN 4844
9020 00 0133	CONCEPT-S3-PU-VD 32m DIN 4844
9020 00 0134	CONCEPT-S3-PL/PR-VD 32m DIN 4844
9020 00 0135	CONCEPT-S3-Px 4844 - VD 32m
9020 00 0136	CONCEPT-S3-ISO 7010, 4844 - VD 32m

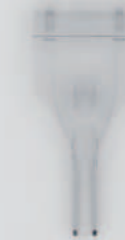
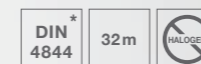
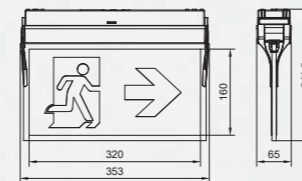
Dimensional drawings [mm]:



Dimensional drawings [mm]:



Dimensional drawings [mm]:



* Only in combination with APS luminaires.

CONCEPT 2

Pictogram panels for WAP safety luminaires



Pictogram panels WAP S1

Pictogram panel for suspended mounting,
Illumination according to EN 1838 or according to DIN 4844.
Viewing distance 12m, pictograms according to ISO 7010

Material: PMMA

9020 00 1011	CONCEPT WAP-S1-PL - VD 12m
9020 00 1012	CONCEPT WAP-S1-PR - VD 12m
9020 00 1013	CONCEPT WAP-S1-PU - VD 12m
9020 00 1014	CONCEPT WAP-S1-PL/PR - VD 12m
9020 00 1015	CONCEPT WAP-S1-PX - VD 12m
9020 00 1016	CONCEPT WAP-S1-ISO 7010 - VD 12m
9020 00 1111	CONCEPT WAP-S1-PL 4844 - VD 12m
9020 00 1112	CONCEPT WAP-S1-PR 4844 - VD 12m
9020 00 1113	CONCEPT WAP-S1-PU 4844 - VD 12m
9020 00 1114	CONCEPT WAP-S1-PL/PR 4844 - VD 12m
9020 00 1115	CONCEPT WAP-S1-PX 4844 - VD 12m
9020 00 1116	CONCEPT WAP-S1-ISO 7010, 4844 - VD 12m

Pictogram panels WAP S2

Pictogram panel for suspended mounting,
Illumination according to EN 1838 or according to DIN 4844.
Viewing distance 20m, pictograms according to ISO 7010

Material: PMMA

9020 00 1021	CONCEPT WAP-S2-PL - VD 20m
9020 00 1022	CONCEPT WAP-S2-PR - VD 20m
9020 00 1023	CONCEPT WAP-S2-PU - VD 20m
9020 00 1024	CONCEPT WAP-S2-PL/PR - VD 20m
9020 00 1025	CONCEPT WAP-S2-PX - VD 20m
9020 00 1026	CONCEPT WAP-S2-ISO 7010 - VD 20m
9020 00 1121	CONCEPT WAP-S2-PL 4844 - VD 20m
9020 00 1122	CONCEPT WAP-S2-PR 4844 - VD 20m
9020 00 1123	CONCEPT WAP-S2-PU 4844 - VD 20m
9020 00 1124	CONCEPT WAP-S2-PL/PR 4844 - VD 20m
9020 00 1125	CONCEPT WAP-S2-PX 4844 - VD 20m
9020 00 1126	CONCEPT WAP-S2-ISO 7010, 4844 - VD 20m

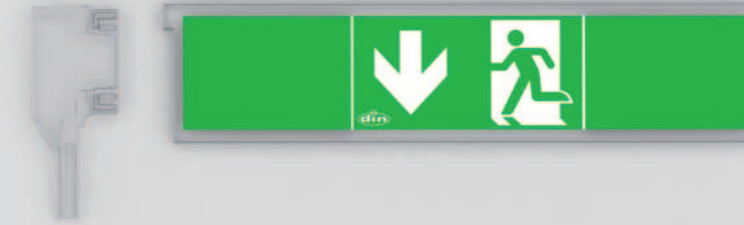
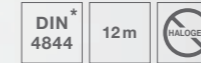
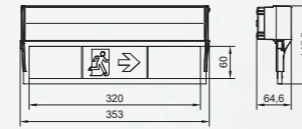
Pictogram panels WAP S3

Pictogram panel for suspended mounting,
Illumination according to EN 1838 or according to DIN 4844.
Viewing distance 32m, pictograms according to ISO 7010

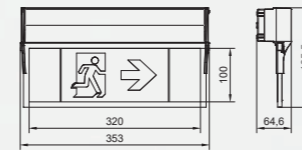
Material: PMMA

9020 00 1031	CONCEPT WAP-S3-PL - VD 32m
9020 00 1032	CONCEPT WAP-S3-PR - VD 32m
9020 00 1033	CONCEPT WAP-S3-PU - VD 32m
9020 00 1034	CONCEPT WAP-S3-PL/PR - VD 32m
9020 00 1035	CONCEPT WAP-S3-PX - VD 32m
9020 00 1036	CONCEPT WAP-S3-ISO 7010 - VD 32m
9020 00 1131	CONCEPT WAP-S3-PL 4844 - VD 32m
9020 00 1132	CONCEPT WAP-S3-PR 4844 - VD 32m
9020 00 1133	CONCEPT WAP-S3-PU 4844 - VD 32m
9020 00 1134	CONCEPT WAP-S3-PL/PR 4844 - VD 32m
9020 00 1135	CONCEPT WAP-S3-PX 4844 - VD 32m
9020 00 1136	CONCEPT WAP-S3-ISO 7010, 4844 - VD 32m

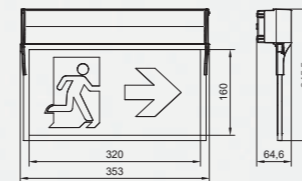
Dimensional drawings [mm]:



Dimensional drawings [mm]:



Dimensional drawings [mm]:



* Only with a luminaire alignment of 90° and in combination with AP5 luminaires.

CONCEPT 2

Accessories for recessed mounting



Ceiling recessed mounting

Item no. (illustration):
 9020 09 5009 CONCEPT 2 AP3 PLC24
 9020 00 0071 CONCEPT-DE/WE
 9020 00 0022 CONCEPT-S2-PR - viewing distance 20m



Wall recessed mounting

Item no. (illustration):
 9020 09 5005 CONCEPT 2 RZ1 PLC24
 9020 00 0071 CONCEPT-DE/WE
 9020 00 0072 CONCEPT-concrete

Ceiling or wall mounting kit for full or semi-recessed mounting

Ceiling or wall mounting kit made of white polycarbonate for structural full or semi-recessed mounting of CONCEPT 2 safety luminaires or emergency sign luminaires.

Material: Polycarbonate, flame-retardant, white, RAL 9003, UV-stabilised

9020 00 0071 CONCEPT-DE/WE

Concrete mounting box CONCEPT-concrete

Mounting box made of galvanised sheet steel for mounting the CONCEPT 2 luminaire series in concrete, incl. two cable entries for 25mm tubes.

Material: steel, galvanised

9020 00 0072 CONCEPT-concrete

NOTE: For this application, an additional CONCEPT-DE/WE ceiling mounting kit is required.

Flush-mounted box: CONCEPT-UP

Mounting box made of galvanised sheet steel for flush-mounting the CONCEPT 2 luminaire series, incl. four cable entries for 25mm tubes.

Material: steel, galvanised

9020 00 0073 CONCEPT-UP

NOTE: For this application, a CONCEPT-DE/WE ceiling mounting kit is required.

Semi-recessed mounting set

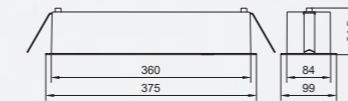
Mounting set for semi-recessed mounting of the CONCEPT 2 luminaire series. Especially for the CONCEPT 2 RZ1 plus/duo and CONCEPT 2 WAP.

Material: polycarbonat

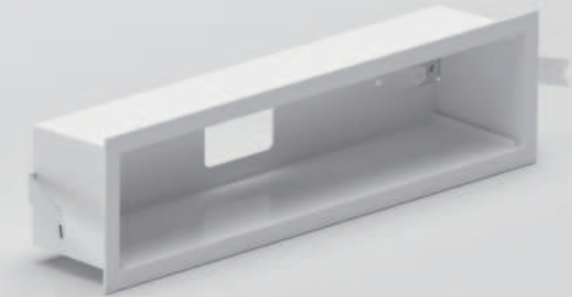
8020 00 0017 CONCEPT Semi-recessed mounting set

NOTE: For this application, a CONCEPT-DE/WE ceiling mounting kit is required. These accessories are mandatory for the WAP panels in combination with the CONCEPT-DE/WE ceiling mounting kit.

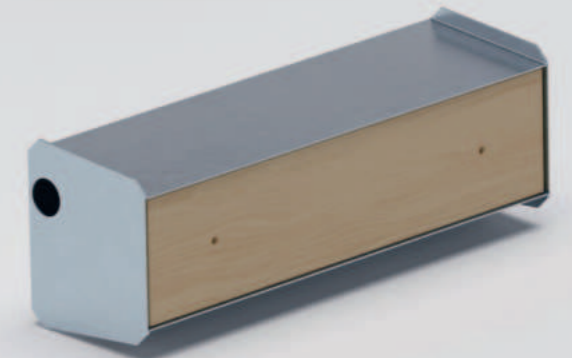
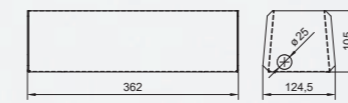
Dimensional drawings [mm]:



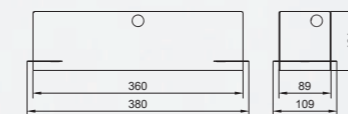
Cut-out: 360x84 mm
 Material thickness: 1-25 mm
 Recessed depth: >85 mm



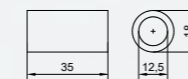
Dimensional drawings [mm]:



Dimensional drawings [mm]:



Dimensional drawings [mm]:



CONCEPT 2

Accessories for wall bracket mounting



Parallel wall surface mounting

Item no. (illustration):
 9020 09 5009 CONCEPT 2 AP3 PLC24
 9020 00 0052 CONCEPT-WA-PP-G plastic
 9020 00 0022 CONCEPT-S2-PR - viewing distance 20 m



Wall surface mounting 90°

Item no. (illustration):
 9020 09 5017 CONCEPT 2 AS5 PLC24
 9020 00 0056 CONCEPT-WA-90 Nirosta V2A
 9020 00 0022 CONCEPT-S2-PR - viewing distance 20 m

Wall bracket CONCEPT-WA-PP

Wall bracket made of metal for mounting the CONCEPT 2 luminaire series parallel to the wall construction. Available in white or special colours.

Material: steel, powder-coated, white, RAL 9003

- 9020 00 0050 CONCEPT-WA-PP steel
- 9020 00 0084 CONCEPT-WA screw set

Wall bracket CONCEPT-WA-PP-G

Closed wall bracket made of metal for mounting the CONCEPT 2 luminaire series parallel to the wall construction.

Available in two standard versions or special colours.

Material WA-PP-G steel: powder-coated, white, RAL 9003

Material WA-PP-G V2A: stainless steel, brushed

- 9020 00 0051 CONCEPT-WA-PP-G steel
- 9020 00 0054 CONCEPT-WA-PP-G V2A
- 9020 00 0084 CONCEPT-WA screw set

Wall bracket CONCEPT-WA-PP-G plastic

Closed wall bracket made of white polycarbonate for mounting the CONCEPT 2 luminaire series parallel to the wall construction.

Material WA-PP-G plastic: polycarbonate, flame-retardant, white, RAL 9003, UV-stabilised

- 9020 00 0052 CONCEPT-WA-PP-G plastic
- 9020 00 0084 CONCEPT-WA screw set

Wall bracket CONCEPT-WA-PP-G plastic

Closed wall bracket made of white polycarbonate for mounting the CONCEPT 2 luminaire series parallel to the wall construction.

Material WA-90 steel: powder-coated, white, RAL 9003

Material WA-90 V2A: steel, brushed

- 9020 00 0055 CONCEPT-WA-90 steel
- 9020 00 0056 CONCEPT-WA-90 V2A
- 9020 00 0084 CONCEPT-WA screw set

Metal cover CONCEPT-MA-G

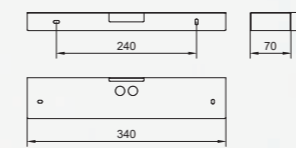
Metal cover for mounting the CONCEPT 2 luminaire series in surface mounting on the ceiling construction. Available in two standard versions or special colours.

Material MA-G: powder-coated, white, RAL 9003

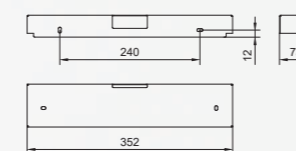
Material MA-G V2A: stainless steel, brushed

- 9020 00 0057 CONCEPT-MA-G
- 9020 00 0058 CONCEPT-MA-G V2A

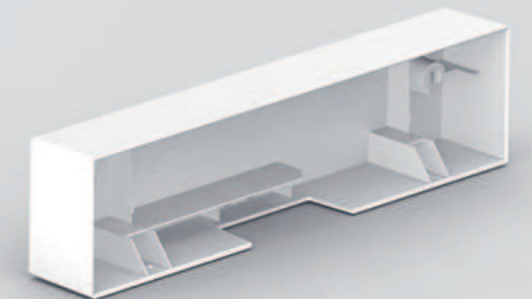
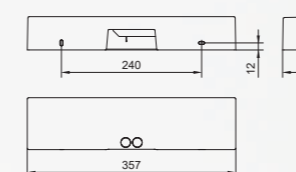
Dimensional drawings [mm]:



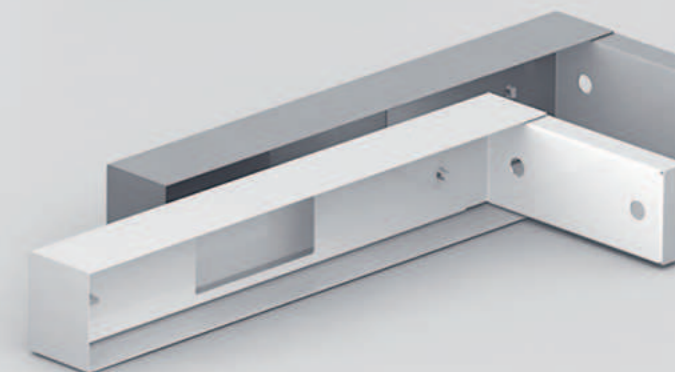
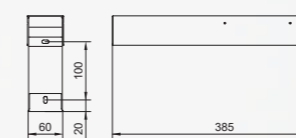
Dimensional drawings [mm]:



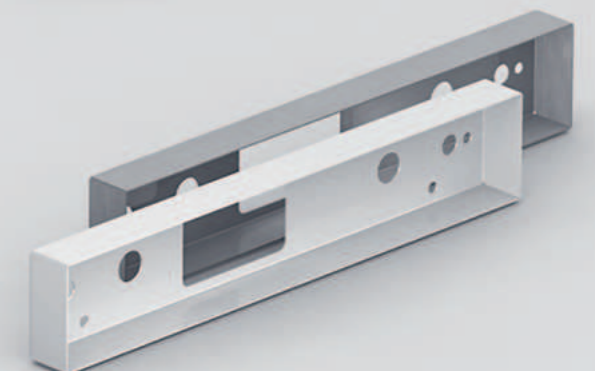
Dimensional drawings [mm]:



Dimensional drawings [mm]:



Dimensional drawings [mm]:



CONCEPT 2

Accessories for suspended mounting



Pendulum mounting

Item no. (illustration):
 9020 09 5016 CONCEPT 2 AS3 PLC24
 9020 00 0066 CONCEPT-PE-10-IP65-SU/PLC24
 9020 00 0032 CONCEPT-S3-PR - viewing distance 32 m

Rope suspension mounting

Item no. (illustration):
 9020 09 5003 CONCEPT 2 SL5 PLC24
 9020 00 0069 Steel-rope suspended, galvanized 3 m
 9020 00 0070 CONCEPT-BE
 9020 00 0023 CONCEPT-S2-PU - viewing distance 20 m

Pendulum set CONCEPT-PE

Two-tube pendulum with a length of 0.5m or 1.0 m in protection class IP40 or IP65.

Material: steel, powder-coated, white, RAL 9003

9020 00 0059	CONCEPT-PE-05-IP40
9020 00 0060	CONCEPT-PE-05-IP65
9020 00 0061	CONCEPT-PE-10-IP40
9020 00 0062	CONCEPT-PE-10-IP65
9020 00 0063	CONCEPT-PE-05-IP40-SU/PLC24
9020 00 0064	CONCEPT-PE-05-IP65-SU/PLC24
9020 00 0065	CONCEPT-PE-10-IP40-SU/PLC24
9020 00 0066	CONCEPT-PE-10-IP65-SU/PLC24

Vario pendulum CONCEPT-VP

Very stable, variable single-tube pendulum made of metal. Infinitely adjustable in lengths from 0.3 m to 0.5 m.

Material: steel, powder-coated, white, RAL 9003

9020 00 0067	CONCEPT-VP
--------------	------------

Mounting set CONCEPT-BE

Mounting set for variable chain or rope suspension of the CONCEPT 2 luminaire series.

Material: plastic, polyamide (PA), white

9020 00 0070	CONCEPT-BE
--------------	------------

NOTE: Chain and rope are not included in the scope of delivery.

Steel cable suspension

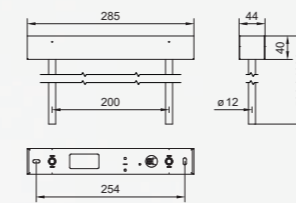
Set for variable rope suspension of the CONCEPT 2 luminaire series. The steel rope has a maximum length of 3.0 m.

Material: steel rope, galvanized

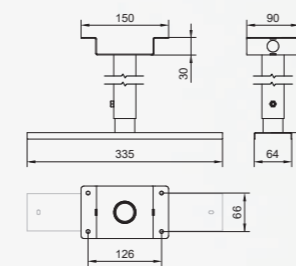
9020 00 0069	Steel-rope suspended, galvanized 3 m
--------------	--------------------------------------

NOTE: For this application, a CONCEPT-BE mounting set is also required.

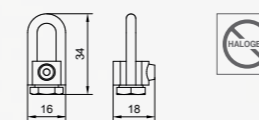
Dimensional drawings [mm]:



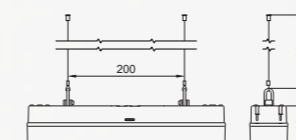
Dimensional drawings [mm]:



Dimensional drawings [mm]:



Dimensional drawings [mm]:



CONCEPT 2

Accessories for ball and impact protection



Parallel wall surface mounting with ball wire guard

Item no. (illustration):
 9020 09 5309 CONCEPT 2 WAP AP3 PLC24
 9020 00 1023 WAP-S2-PU - VD 20m
 9020 00 0075 CONCEPT-BSK2
 © PICTURE: www.nohrd.com



Ceiling recessed mounting with protective cover

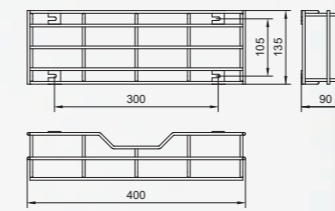
Item no. (illustration):
 9020 09 5013 CONCEPT 2 TS3 PLC24
 9020 00 0071 CONCEPT-DE/WE
 9020 00 0080 CONCEPT-SA IK10

Wire guard CONCEPT-BSK1

Ball wire guard made of metal which can be used for the CONCEPT 2 luminaire series type RZ1, AP, AS, SL, TS and CONCEPT 2 WAP type AP, SL.
 Material: steel, powder-coated, white, RAL 9003

9020 00 0074 CONCEPT-BSK1

Dimensional drawings [mm]:

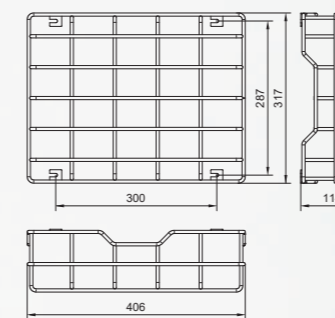


Wire guard CONCEPT-BSK2

Ball wire guard made of metal for the CONCEPT 2 / CONCEPT 2 WAP luminaire series which can be used in combination with the S1 / S2 / S3 pictogram panels and the CONCEPT 2 RZ2 luminaire series.
 Material: steel, powder-coated, white, RAL 9003

9020 00 0075 CONCEPT-BSK2

Dimensional drawings [mm]:



Protective cover CONCEPT-SA IK10

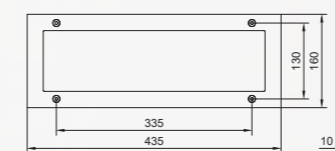
Very impact-resistant transparent protective cover, made of polycarbonate incl. four fixing screws, for the CONCEPT 2 luminaire series, e.g. application in sports facilities.

Material: plastic, polycarbonate, flame-retardant, transparent, UV-stabilised

9020 00 0080 CONCEPT-SA IK10

NOTE: For this application, a CONCEPT-DE/WE ceiling mounting kit is required.

Dimensional drawings [mm]:



CONCEPT 2

Accessories for protection against the elements



Wall surface mounting with rain cover

Item no. (illustration):
9020 09 5018 CONCEPT 2 RZ1 plus PLC24
9020 00 0076 CONCEPT-RD

Rain cover CONCEPT-RD

Transparent rain cover for additional protection of the CONCEPT 2 luminaire series from the elements.

Material: plastic, polycarbonate, flame-retardant, transparent, UV-stabilised

9020 00 0076 CONCEPT-RD

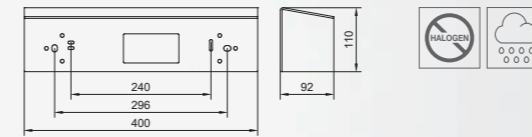
Wall bracket CONCEPT-WA-PP-G plastic

Closed wall bracket made of white polycarbonate for mounting the CONCEPT 2 luminaire series parallel to the wall construction incl. canopy function.

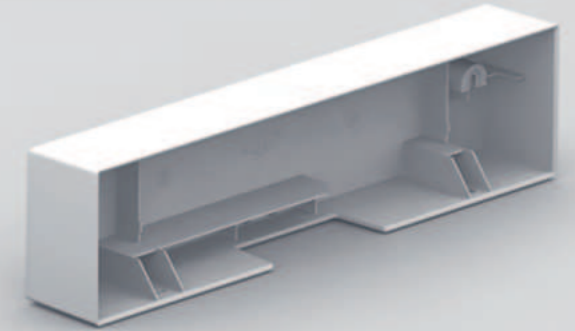
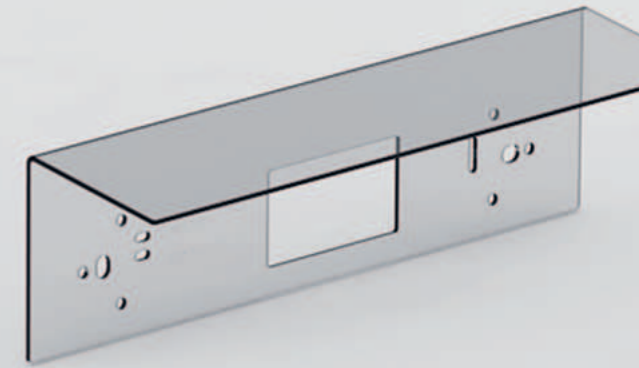
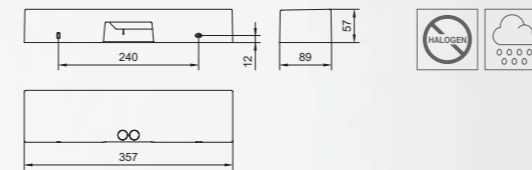
Material: plastic, polycarbonate, flame-retardant, white, RAL 9003, UV-stabilised

9020 00 0052 CONCEPT-WA-PP-G plastic

Dimensional drawings [mm]:



Dimensional drawings [mm]:



Flexible usability

The CONCEPT 2 offers flexible usability in all installation variations thanks to its versatile accessories.

For more information, videos, and datasheets of the CONCEPT 2, please visit here:



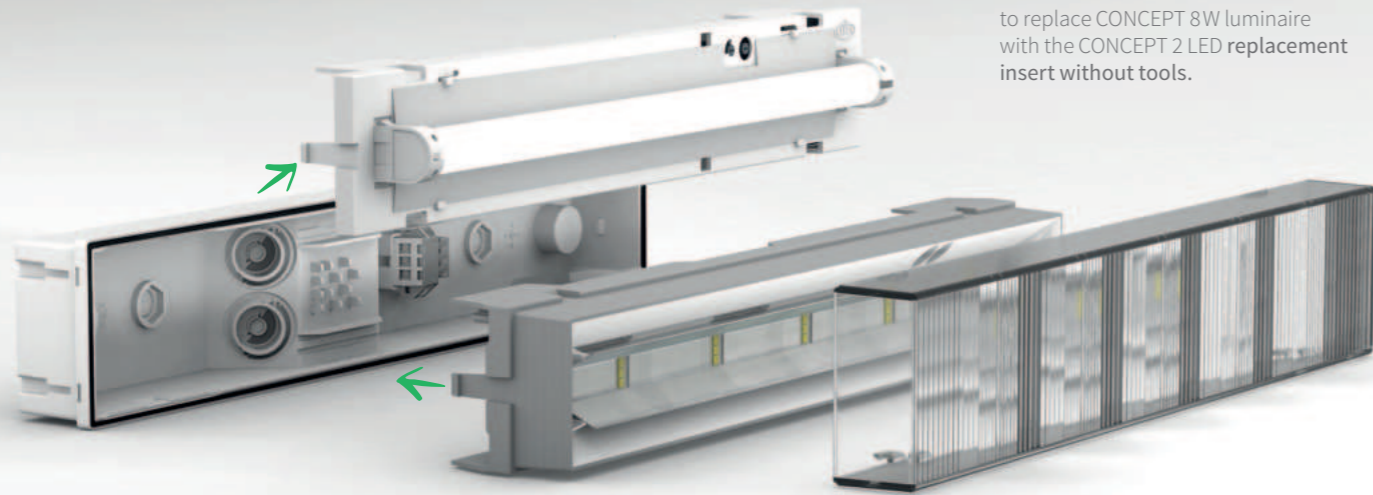
CONCEPT 2

LED replacement inserts for safety luminaire

On average our customers need

12 sec.

to replace CONCEPT 8W luminaire with the CONCEPT 2 LED replacement insert without tools.



Ceiling mounting/Wall mounting

Housing: Polycarbonate, flame-retardant, white, RAL9003, UV-stabilised
 Cover: Polycarbonate, flame-retardant, transparent, UV-stabilised, light-guiding (AS)
 Protection class: □ (230V), ◇ (PLC24)
 Protection type: IP 65
 Temperature range: -15 °C to +40 °C



CONCEPT 2 Inserts AP/AS and SL/TS

8020 09 5009 CONCEPT 2 insert AP3/AS3 PLC24
 8020 0x 5011 CONCEPT 2 insert AP5/AS5
 8020 09 5001 CONCEPT 2 insert SL3/TS3 PLC24
 8020 0x 5003 CONCEPT 2 insert SL5/TS5

CONCEPT 2 insert for AP / AS

LED replacement insert for converting existing CONCEPT AP/AS luminaires to LED technology with 50,000h guarantee.

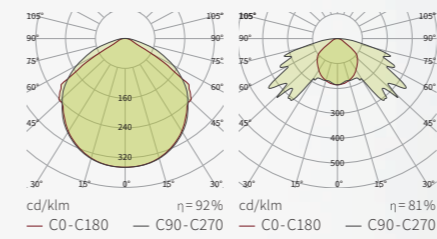
Mounting height [m]	↔		↔↔		↔↔↔		↔↔↔↔	
	1 lux		1 lux		1 lux		1 lux	
2.5	3.6	4.2	8.1	9.2	8.8	11.7	3.5	4.9
3.0	3.8	4.8	9.0	10.6	9.4	12.8	3.7	5.3
3.5	3.9	5.3	10.0	11.8	9.9	13.7	3.8	5.6
4.0	3.8	5.8	10.5	13.1	10.3	14.5	3.8	5.9
4.5	3.7	6.3	10.8	14.3	10.5	15.2	3.8	6.1

CONCEPT 2 AP3 | CONCEPT 2 AP5 (without pictogram panel)

Mounting height [m]	↔		↔↔		↔↔↔		↔↔↔↔	
	1 lux		1 lux		1 lux		1 lux	
2.5	2.6	3.6	6.6	8.1	10.8	15.5	4.1	5.9
3.0	2.6	3.9	7.1	9.1	10.8	15.6	4.5	6.5
3.5	2.5	4.2	7.4	10.0	11.5	16.6	4.4	6.6
4.0	2.3	4.4	7.4	10.8	12.4	17.8	4.3	6.7
4.5	2.1	4.4	7.3	11.5	12.4	18.4	2.7	7.2

CONCEPT 2 AS3 | CONCEPT 2 AS5 (without pictogram panel)

Light distribution of AP and AS:



CONCEPT 2 insert for SL / TS

LED replacement insert for converting existing CONCEPT SL / TS luminaires to LED technology with 50,000h guarantee.

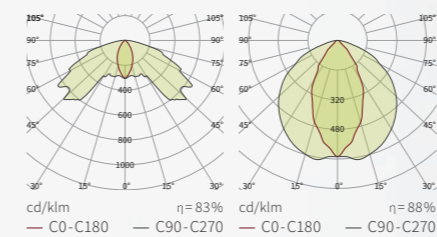
Mounting height[m]	↔		↔↔		↔↔↔		↔↔↔↔	
	1 lux		1 lux		1 lux		1 lux	
2.5	1.9	2.4	4.5	5.2	12.9	16.6	5.5	6.9
3.0	2.0	2.6	4.9	6.0	14.1	18.3	6.0	7.4
3.5	2.1	2.8	5.4	6.6	15.3	19.4	6.2	8.0
4.0	2.2	3.0	5.7	7.1	16.4	20.4	6.5	8.6
4.5	2.2	3.2	5.8	7.5	17.2	21.6	6.9	9.1

CONCEPT 2 SL3 | CONCEPT 2 SL5 (without pictogram panel)

Mounting height[m]	↔		↔↔		↔↔↔		↔↔↔↔	
	1 lux		1 lux		1 lux		1 lux	
6.0	3.1	4.7	8.0	10.8	14.3	20.3	5.1	8.2
7.0	2.8	4.8	8.4	11.7	14.6	21.7	4.9	8.5
8.0	2.5	4.9	8.6	12.8	14.6	22.7	4.5	8.7
9.0	1.7	5.2	8.5	13.3	14.4	23.5	3.7	8.8
10.0	0.5	5.3	7.8	13.6	13.8	24.1	2.4	8.7

CONCEPT 2 TS3 | CONCEPT 2 TS5 (without pictogram panel)

Light distribution of SL and TS:



* Can be combined with panels of these viewing distances.

CONCEPT 2

LED replacement inserts for emergency sign luminaires



LED replacement insert for CONCEPT (2)

Simply replace, save and remain compliant with standards.

Bulb replacement in just 12 seconds. Save up to 60% on costs and 67% on energy in your building.



About your savings potential:
ledaustausch.notlicht.at

COMPARISON 8 W VS. LED TECHNOLOGY

	8W-technology	CONCEPT 2 LED technology
Mean service life	8,000h	80,000h
Guaranteed service life	None	50,000h
Light in continuous operation Energy consumption/year	62.46 kWh	21.02 kWh
Energy saving per light		~ 41 kWh
Light bulb replacement	1x per year	1x in approx. 10 years

Wall mounting

Housing:	Polycarbonate, flame-retardant, white, RAL 9003, UV-stabilised
Cover:	Polycarbonate, flame-retardant, opal, UV-stabilised
Protection class:	□ (230V), ◇ (PLC24)
Protection type:	IP 65
Temperature range:	-15 °C to +40 °C



CONCEPT 2 insert RZ1

8020 0x 5005	CONCEPT 2 insert RZ1
8020 09 5018	CONCEPT 2 insert RZ1 plus
8020 09 5019	CONCEPT 2 insert RZ1 duo

CONCEPT 2 insert RZ2

8020 0x 5007	CONCEPT 2 insert RZ2
--------------	----------------------

Accessory

9020 00 0082	CONCEPT RZ1 picto Px one-sided
9020 00 0085	CONCEPT RZ1 picto, ISO 7010, one-sided
9020 00 0071	CONCEPT-DE/WE

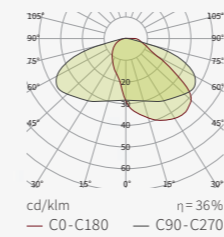
CONCEPT 2 insert for RZ1

LED replacement insert for converting existing CONCEPT RZ1 luminaires to LED technology with 50,000h guarantee.

Mounting height [m]	1 lux	0.5 lux	1 lux	1 lux
2.5	3.3	3.8	3.4	9.0
3.0	3.5	4.3	3.4	9.5
3.5	3.5	4.6	3.3	9.7
4.0	3.5	4.9	3.0	9.8
4.5	3.3	5.0	2.5	9.5

CONCEPT 2 RZ1 plus/duo

Light distribution RZ1 plus/duo:



CONCEPT 2 insert for RZ2

LED replacement insert for converting existing CONCEPT RZ2 luminaires to LED technology with 50,000h guarantee.



CONCEPT 2

Special pictograms, item numbers and symbols

ISO 7010
Special pictograms
Item no. (illustration):
9020 09 5003 CONCEPT 2 SL5 PLC 24
9020 00 0054 CONCEPT-WA-PP-G Nirosta V2A
9020 00 0026 CONCEPT-S2-ISO 7010 - VD 20 m



Special pictograms
Item no. (illustration):
9020 09 5011 CONCEPT 2 AP5 PLC 24
9020 00 0071 CONCEPT-DE / WE
9020 00 0033 CONCEPT-S3 - viewing distance 32 m
Pikto-1 ÖNORM Special pictogram one-sided



CONCEPT 2 - ISO 7010 pictograms

Pictograms available as standard:



Fire extinguisher Fire hose

Customised solutions upon request

Let us know the project requirements and we will find the right solution.



First aid Defibrillator Special pictograms

Note:

All distance tables are – unless otherwise labelled – with a maintenance factor (WF) 0.90 calculated

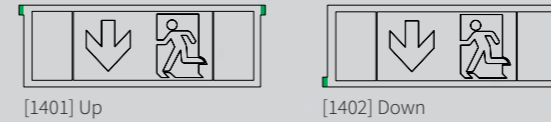


Parameter (illustration):

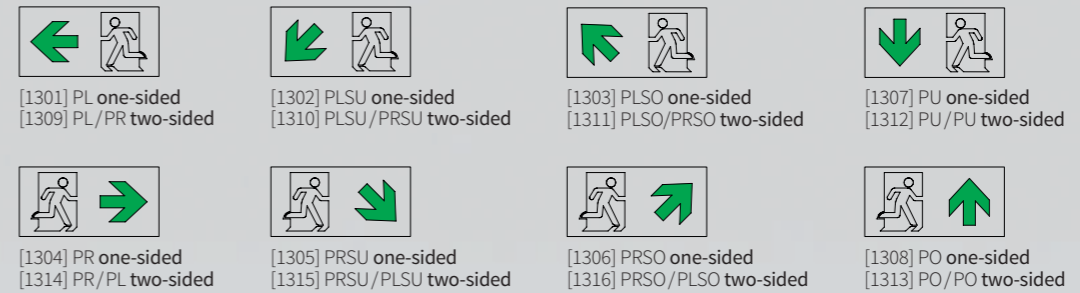
Stop: 1401 Up
One-sided arrow: 1305 PRSU one-sided
Symbol: 1101 Person

PX – pictogram panel parameters

STOP CONCEPT parameters



ARROW ONE-SIDED or ARROW TWO-SIDED parameters



SYMBOL parameters



Explanation of symbols

The following symbols have been used in the catalogue and have the following meaning:

XX m	Viewing distance: The viewing distance in metres is the standardised distance at which a person is still clearly able to recognise a backlit emergency sign in accordance with EN 1838.	STEEL	Metal design: Marked items can be used as metal design accessories.
IP/XX	Protection type IP XX: The protection type provides information on the safe operation of the luminaire under different ambient conditions acc. to EN 60529.	Ball	Ball throwing or impact protection: Marked accessories indicate increased impact protection. Ball-proof D1 and W2 according to DIN 18032-3:2023-12.
-15 to +40 °C	Temperature range*: The luminaire is suitable for temperatures from -15°C to +40°C.	Cloud	Protection against the elements: The additional rain cover provides special protection from the elements for outdoor applications.
50,000h	50,000h full guarantee: din-Sicherheitstechnik GmbH & Co KG guarantees a service life of 5.7 years based on the guarantee and warranty conditions.	Dimmer	Dimming function: The dimming function is activated directly via the supplying emergency luminaire unit. In emergency mode, the light output is automatically increased to 100%.
DIN 4844	DIN 4844: Increased pictogram illumination in accordance with DIN 4844 is available.	RAL COLOURS	RAL colours: On request, various components are available in all RAL colours.
CE	CE mark: The product complies with the requirements of EN 60598-2-22 as well as EC Directive 93/98/EC (Low Voltage Directive).	XX	Item number: Item numbers with xx in the colour green indicate the availability of different technologies incl. scAT and scCMR.
HALOGEN	Halogen free: The materials used in the luminaire are free from halogens, acc. to IEC 61249-2-21.	X	Item number: Item numbers with x in the colour blue indicate the availability of different technologies.
VLC	Visible Light Communication (VLC): Data exchange via bidirectional luminaire communication.		

* The temperature ranges for CONCEPT 2 scAT and CONCEPT 2 scCMR can be found in the data sheets.

CONCEPT 2

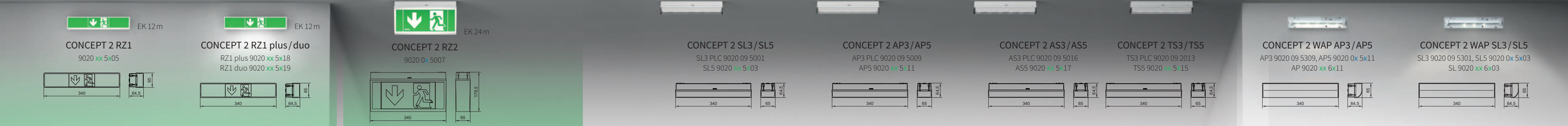
Choice of luminaire and accessories

Emergency sign luminaire RZ1¹

Emergency sign luminaire RZ2

Safety luminaires⁵

WAP safety luminaires⁵



Wall recessed mounting/ Semi-recessed wall mounting

Ceiling recessed mounting

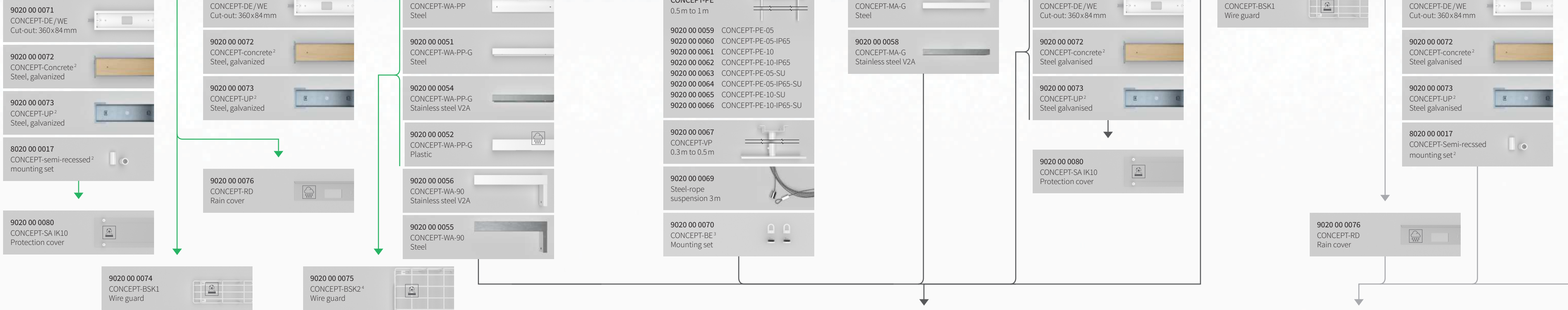
Wall bracket mounting

Suspended mounting

Ceiling surface mounting

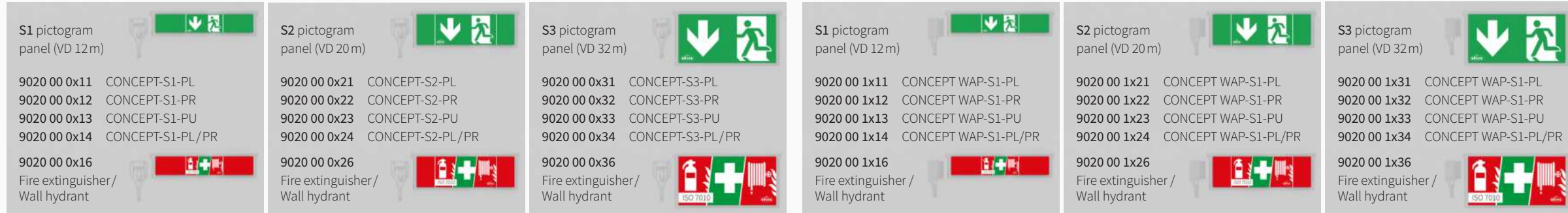
Ceiling recessed mounting

Wall semi-recessed mounting



Pictogram panel⁴

WAP Pictogram panel⁴



Composition of the part numbers

explained by the example CONCEPT 2 SL (5)

Monitoring type 07 = scAT 11 = scCMR 9020 xx 5x03	Monitoring type 3 = ILS 5 = lmax350 9 = PLC24 9020 0x 5x03
Nominal operating time 0 = scCMR 1-8 h/ or with centrally supplied luminaire 1 = scAT 1h 3 = scAT 3h 4 = scAT 8h	Monitoring type 1 = PLCswitch 2 = PLCswitch inv 3 = WAP PLC 4 = WAP PLCswitch 5 = WAP PLCswitch inv

¹ RZ1 plus and duo only possible in semi-recessed mounting.
² Can only be used in combination with CONCEPT-DE/WE.
³ Mounting set for chain or rope suspension RAL 9003.
⁴ The ball wire guard CONCEPT-BSK2 can also be combined with the pictogram panels CONCEPT-S1/S2/S3.
⁵ The safety luminaires are available with different illumination characteristics. Therefore, make sure that the luminaires are mounted in the correct position.

04 / 2024 | Subject to technical changes.

Note: All dimensions in the dimensional drawings are given in mm. Some of the illustrations are proportionally reduced or enlarged. All specified viewing distances comply with EN 1838 for emergency signs.

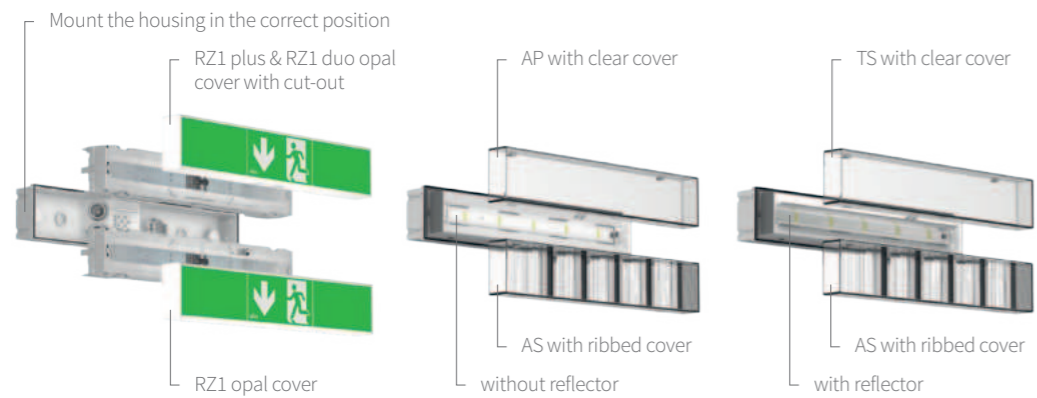
RAL Various components are available in custom colors and in all RAL colors on request.
x=0 ... Illumination of pictogram panels according to EN 1838
x=1 ... Illumination of pictogram panels according to DIN 4844

CONCEPT 2

Plug & play - Installation with success guarantee

INSERTS AND COVERS

for emergency and safety luminaires



For easy, bubble-free attachment of the pictogram, use our cleaning & processing set & application set art. no.: 9000002.

CORRECT CABLE ENTRY

Insert the cables carefully and push through the grommet. The grommet may not be cut.



TENSION-FREE MOUNTING

Mount the housing as much tension-free as possible.



LOCKING THE PANEL HOLDER

In the event of installing panel luminaires, make sure that the panel holder is clicked in properly before mounting the accessories.



LOCKING THE MOUNTING CLIPS

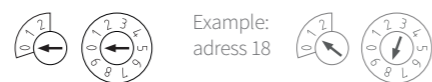
Make sure that the mounting clips click in properly and use new clips when reassembling.



CONCEPT Clip (2 pcs) art.no.: 802000009

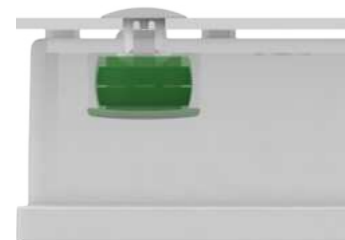
ADDRESSING OF THE LUMINAIRE

Carry out addressing by the internal addresses or, in the case of PLC 24 luminaires, via the SU system.

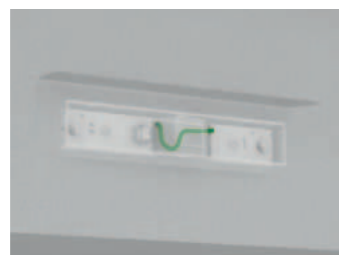


PROTECTION AGAINST WEATHER INFLUENCES

Special measures and accessories for additional protection.



Attach the enclosed IP65 plugs incl. the black rubber washers to the fixing points.



The application of a so called „water nose“ is an effective protection against water ingress.



Rain cover art. no.: 9020 00 0076
Wall bracket art. no.: 9020 00 0052

Your emergency lighting system at one glance. At any time, in any place.

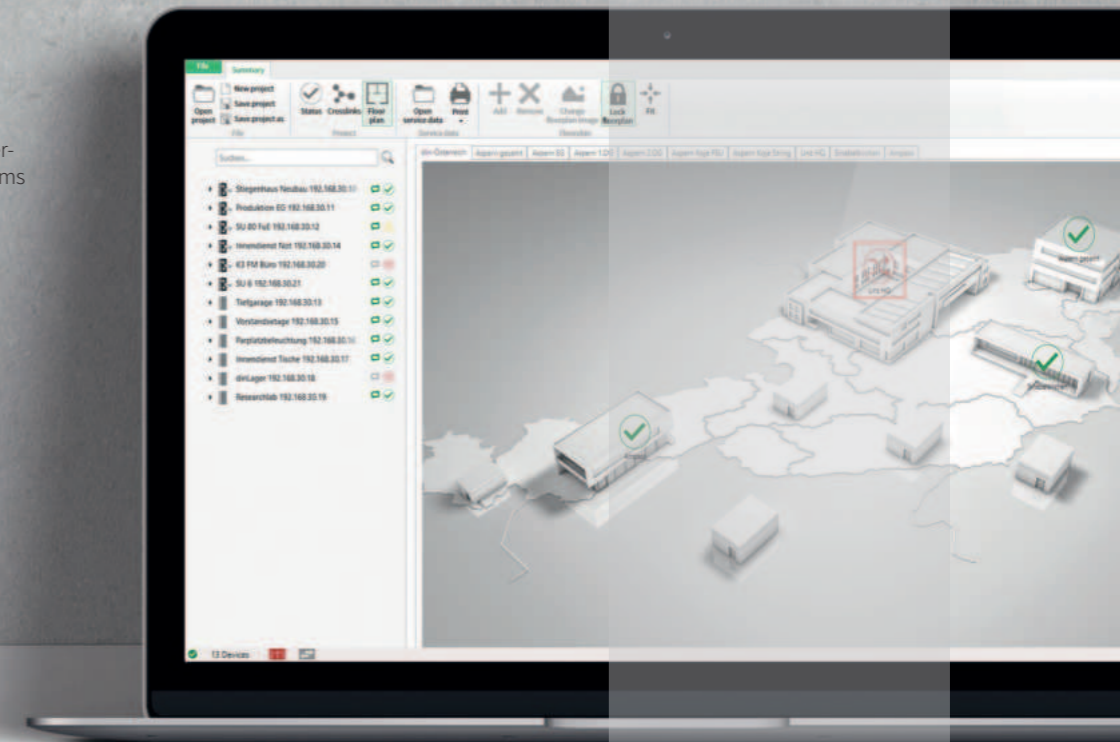
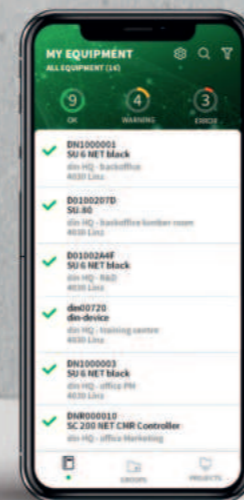
Use our **mySU app** or the **SU CONTROL** software to keep an eye on the status of your emergency lighting system. Get in touch with your **din-contact** for your personal access.

More about our software solutions: software.notlicht.at



Software solutions
Download now!

The **mySU app** not only gives you an overview overview of the status of your systems but also notifies you immediately.



The **SU CONTROL** software supports you in programming and configuration of your emergency systems with various functions.

Austria
din - Dietmar Nocker Sicherheitstechnik GmbH & Co KG
Kotzinastraße 5-7, 4030 Linz, Österreich
Tel.: +43 732 7708 11-0
office@din-notlicht.at

Slovenia
din - Dietmar Nocker Sicherheitstechnik d.o.o.
Zagrebska cesta 90, 2000 Maribor, Slovenija
Tel.: +386 2 421 3190
office@din-notlicht.si

www.din-notlicht.com

Italy
din - Sicherheitstechnik Italia S.r.l.
Via Filippo Argelati 45, 20143 Milano, Italia
Tel.: +39 02 8942 0811
office@din-notlicht.it

Germany
din - Dietmar Nocker Sicherheitstechnik Deutschland GmbH
Semmelweisstraße 8, 82152 Planegg
Tel.: +49 89 9042 2648
officemuc@din-notlicht.de